

LBR128

Aluminium Safety Stair Nosing with Poly Insert and Lumo Strip

- Ramped back, short front
- Ribbed polymer insert with a luminescent strip
- Pre-drilled and countersunk
- CA290 Adhesive, Mechanical fixings
- Surface mount
- For concrete, timber, tile and vinyl surfaces

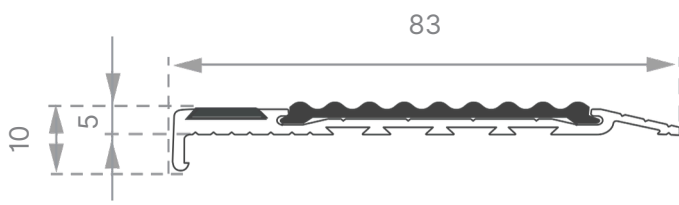
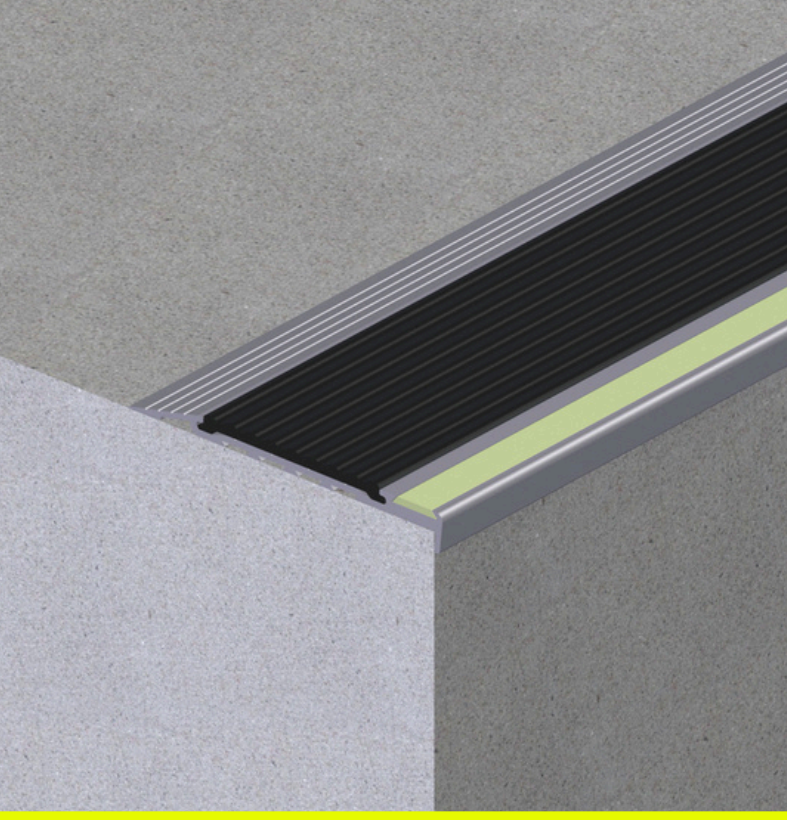
Aluminium Safety Stair Nosings with Poly Insert and Luminescent Strip enhance stair safety in public spaces. Designed for visibility and traction, they feature a luminescent strip for visibility and a ramped back for easy installation.

Installation guide

Install LBR128 to required areas as marked in accordance with manufacturer's recommendations. For the best results we can provide installation.

Application

Interior and exterior



Nosing profile colours

Natural (standard). On request: Black, Bronze, Gold, Saffron, Chocolate, Olive



Nosing insert colours

Black, Light Grey, Mid Grey, Dark Grey, Red, Tangerine, Yellow, Beige, Blue, White, Ultra Violet, Raspberry, Teal, Lime Green, Coral



Haptix™ BY CMT GROUP

haptix.co.nz
0800 HAPTIX